

◎ INJECTION PRESS RANGE: 550-1000 TON ◎

Digital AC SERVO Robot Series

TW-1700HMOVII TWS-1700HMOVII



COMMON SPECIFICATIONS

| Power Source | Air Pressure | Drive | Posture (air cylinder) | Recommended Max Load | Posture Torque @ 70 PSI | Control Types |
|---------------------|------------------|----------------|------------------------|----------------------|-------------------------|---------------|
| 200 VAC ± 10% 60 Hz | 70 psi (.48 MPa) | AC Servo Motor | 90° | 22 lbs (10 kg) | 40.6 ft-lbs (55.0 N·m) | STEC-520B |

GENERAL SPECIFICATIONS

| Model | Stroke | | | | Electric Consumption (kVA) | Max Power Consumption (kW) | Main Body Weight (KG) | Air Consumption (ft³) |
|----------------|------------------|------------------|------------------|------------------|----------------------------|----------------------------|-----------------------|------------------------|
| | (P) Vertical | (R) Vertical | Crosswise | Traverse | | | | |
| TW-1700HMOVII | 47.24" (1800 mm) | N/A | 44.49" (1130 mm) | 70.87" (2500 mm) | 12.0 | 7.2 | 1212 (2672 lbs) | 0.67 (18.9 NI / Cycle) |
| TWS-1700HMOVII | 47.24" (1800 mm) | 47.24" (1850 mm) | 38.98" (990 mm) | 70.87" (2500 mm) | 18.0 | 10.8 | 1291 (2846 lbs) | 0.67 (18.9 NI / Cycle) |

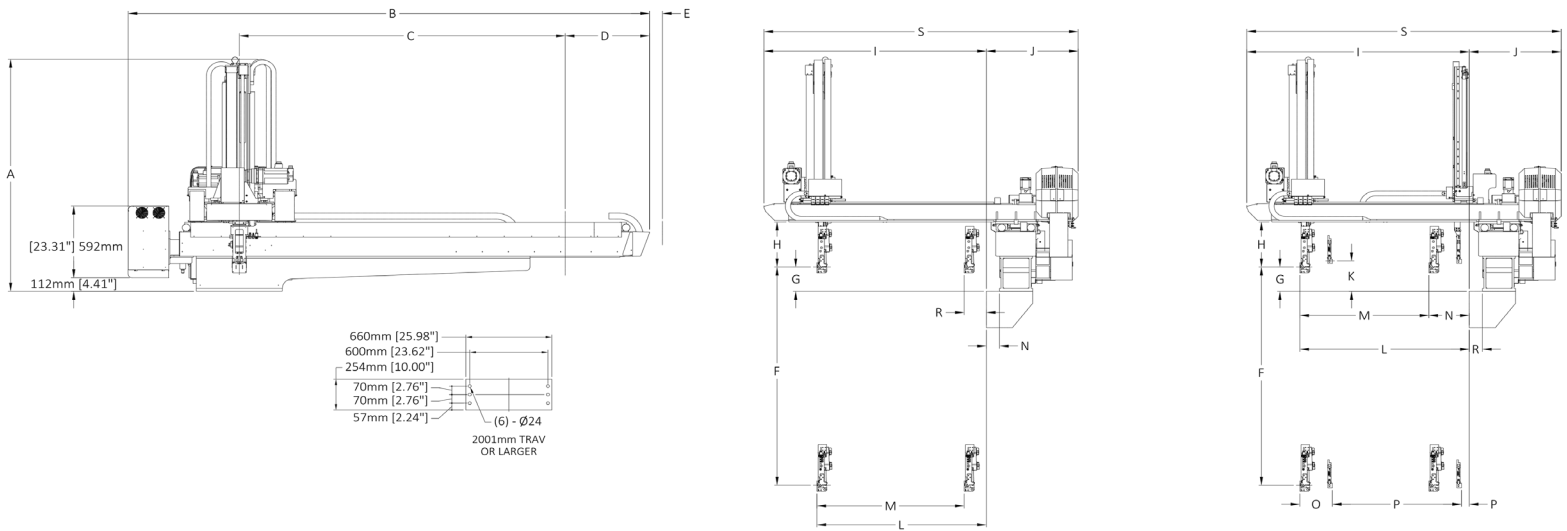
STANDARD FEATURE

| |
|-------------------------------------------|
| Vacuum Generator with Part Present Sensor |
| Part Grip Circuit |
| Sprue Grip Circuit |
| USB Port |
| Ethernet Port |
| Sample and Chuck Change Positons |
| Product Packaging (256 each axis) |
| CNC Step Programming |
| Micro SD Card |
| CPC® and AMP® Connections at the Head |
| Active Vibration Control |
| IMM Mounting Weldment |
| Multi- Level Password Protection |
| Position, Speed and Timer Adjust in Auto |
| Alarm History |
| Grease Pocket LM Bearings |

OPTION LIST

| |
|------------------------------------------------------|
| Additional Vacuum Generator with Part Present Sensor |
| Additional Part Grip |
| Nipper on Chuck |
| Rotation 90°, 180° 2-Position, 180° 3-Position |
| Shuttle on Tool |
| Mold Spray |
| Air Blow |
| 1-3 Color Alarm Light |
| Special Paint |
| Free Packaging |
| Central Lube |
| Quick Chuck Change |
| Servo Posture Wrist |

OVERALL DIMENSIONS



| | | TW-1700HMOVII | TWS-1700HMOVII |
|---|--------------------------------------------|------------------|------------------|
| A | Overall Height | 75.35" (1914mm) | 75.35" (1914mm) |
| B | Overall Width | 157.44" (3999mm) | 157.44" (3999mm) |
| C | Traverse Stroke | 98.43" (2500mm) | 98.43" (2500mm) |
| D | Overhang, Release Side | 25.43" (646mm) | 25.43" (646mm) |
| E | Cable Guide Overhang | 0 | 0 |
| F | (P) Vertical Stroke | 70.87" (1800mm) | 70.87" (1800mm) |
| G | (P) Vertical Standby | 7.87" (200mm) | 7.87" (200mm) |
| H | Bottom of Crosswise to Chuck Mount Postion | 14.57" (370mm) | 14.57" (370mm) |
| I | Mold Mounting Face - Crosswise Arm End | 67.17" (1706mm) | 67.17" (1706mm) |
| J | Mold Mounting Face - Box End | 27.72" (704mm) | 27.72" (704mm) |
| K | (S) Vertical Standby | - | 9.84" (250mm) |
| L | (P) Crosswise Reach Max. | 51.18" (1300mm) | 51.18" (1300mm) |
| M | (P) Crosswise Stroke Max. | 44.49" (1130mm) | 38.98" (990mm) |
| N | (P) Crosswise Standby Min. | 6.69" (170mm) | 12.20" (310mm) |
| O | (P) Proximity Min. | - | 9.84" (250mm) |
| P | (S) Crosswise Stroke Max. | - | 38.98" (990mm) |
| Q | (S) Crosswise Standby Min. | - | 2.36" (60mm) |
| R | Base Offset | 3.98" (101mm) | 3.98" (101mm) |
| S | Box End - Crosswise Arm End | 94.88" (2410mm) | 94.88" (2410mm) |

All stated here is subject to change without notice



Wisconsin (HQ)

N90 W14401 Commerce Drive
Menomonee Falls, WI 53051
Phone: 262-253-3550
Fax: 262-253-3559

Email: kscheife@starautomation.com

California

18141 Beach Blvd. Unit 195
Huntington Beach, CA 92648
Phone: 714-375-2400
Fax: 714-375-2446

Email: ryamasaki@starautomation.com

Georgia

5555 Oakbrook Parkway Suite 320
Norcross, GA 30093
Phone: 770-582-9350
Fax: 770-582-9351

Email: chebert@starautomation.com

Indiana

5625 Vogel Road Unit B
Evansville, IN 47715
Phone: 812-475-9947
Fax: 812-475-9949

Email: sberry@starautomation.com

Michigan

17197 North Laurel Park Dr. Suite 125
Livonia, MI 48152
Phone: 734-462-9522
Fax: 734-462-9527

Email: tsukuda@starautomation.com

Rhode Island

860A Waterman Avenue
E Providence, RI 02914
Phone: 401-434-0617
Fax: 401-434-0627

Email: sales@starautomation.com

Tennessee

Sales Phone: 678-428-4202
Service Phone: 615-796-5670
Email: chebert@starautomation.com

Star Seiki Mexico S.A. De C.V.

Blvd Bernardo Quintana #7001
Torre II Oficina 1004 Colonia Centro Sur,
Queretaro, CP. 76090 Mexico
Phone: +52-442-199-5180

Email: msawada@starseikimexico.com